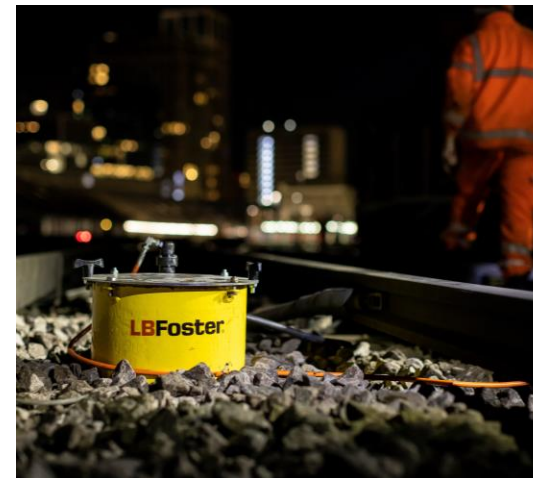


# Field Services

# On Track Services

- > Installations
  - > We offer installation of all unit types and spare parts
- > Maintenance
  - > Offering support to inexperienced rail teams
  - > Or to fully own maintenance schedules of specified assets
- > Scoping & Site Surveys
  - > To advise on lubrication solutions
  - > To advise on siting potential units
- > Trouble Shooting
  - > Attending site to review faulty and damaged equipment



# Training

- > Rail Friction Management Course
  - > 3 day course
  - > Network Rail approved
- > One Day Product Specific Training
  - > For all available electric and hydraulic solutions
  - > Network Rail approved
- > On-Track Practical Training
  - > For installation, maintenance and repairs.
- > Bespoke courses available to meet customers specific requirement
- > Training courses are available internationally and online too



# Thank you