

PROTECTOR® IV

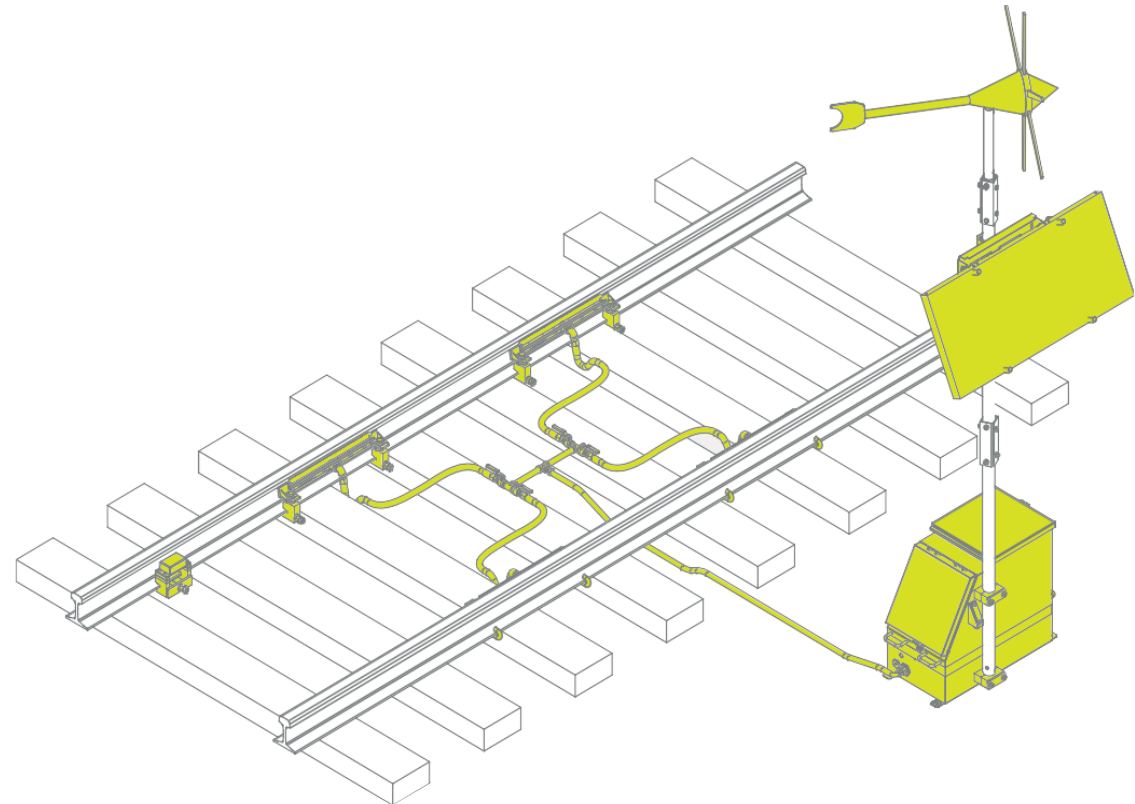
Intelligent trackside friction management

PROTECTOR® IV

Our configurable fourth generation PROTECTOR® system accurately targets friction modifying material on the appropriate part of the rail.

When protecting track and reducing fuel consumption are among the top priorities for network operators, friction management offers a high return; from increasing operational efficiency through fuel savings and reduced track maintenance to saving money in rails and sleepers.

Our proven, robust PROTECTOR® application system sets the industry standard. PROTECTOR is designed to apply either gauge face grease or KELTRACK®, our revolutionary friction modifier via our specially designed gauge face distribution bars/blades and top of rail application bars.



Key Benefits

Improved

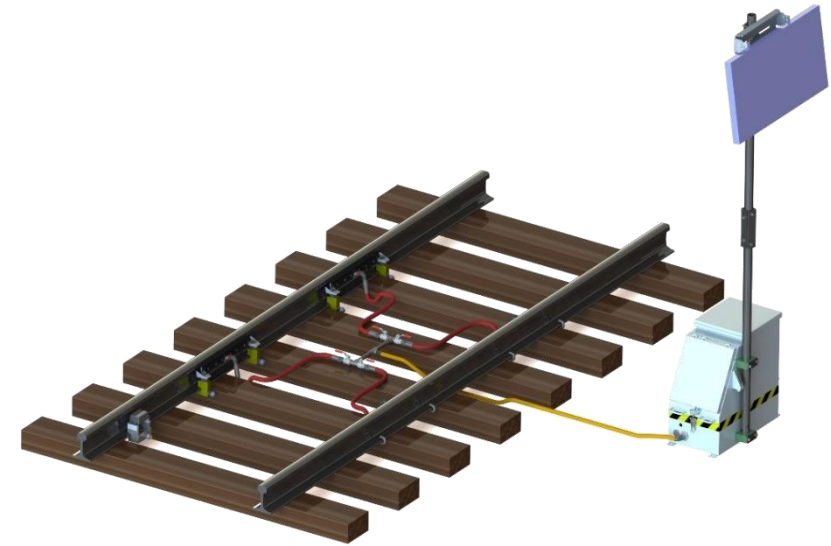
- > Operational efficiency
- > Safety and reliability
- > Extended product spread
- > Extended refilling intervals, reducing annual maintenance costs
- > Fuel Savings
- > Operation, commissioning and minimal on-going maintenance
- > Increased grease/friction modifier capacity

Reduced

- > Noise
- > Wheel and rail wear
- > Installation time down to 2hrs

Added

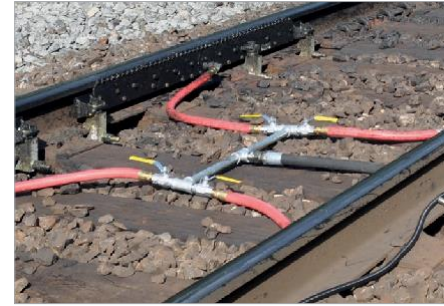
- > Non-contact wheel detector
- > Remote performance monitoring (RPM) options available



Functionality and configurations

The PROTECTOR IV system consists of a trackside cabinet with clean hands compartment and product reservoir, both with the security of a lockable weatherproof sealed lid.

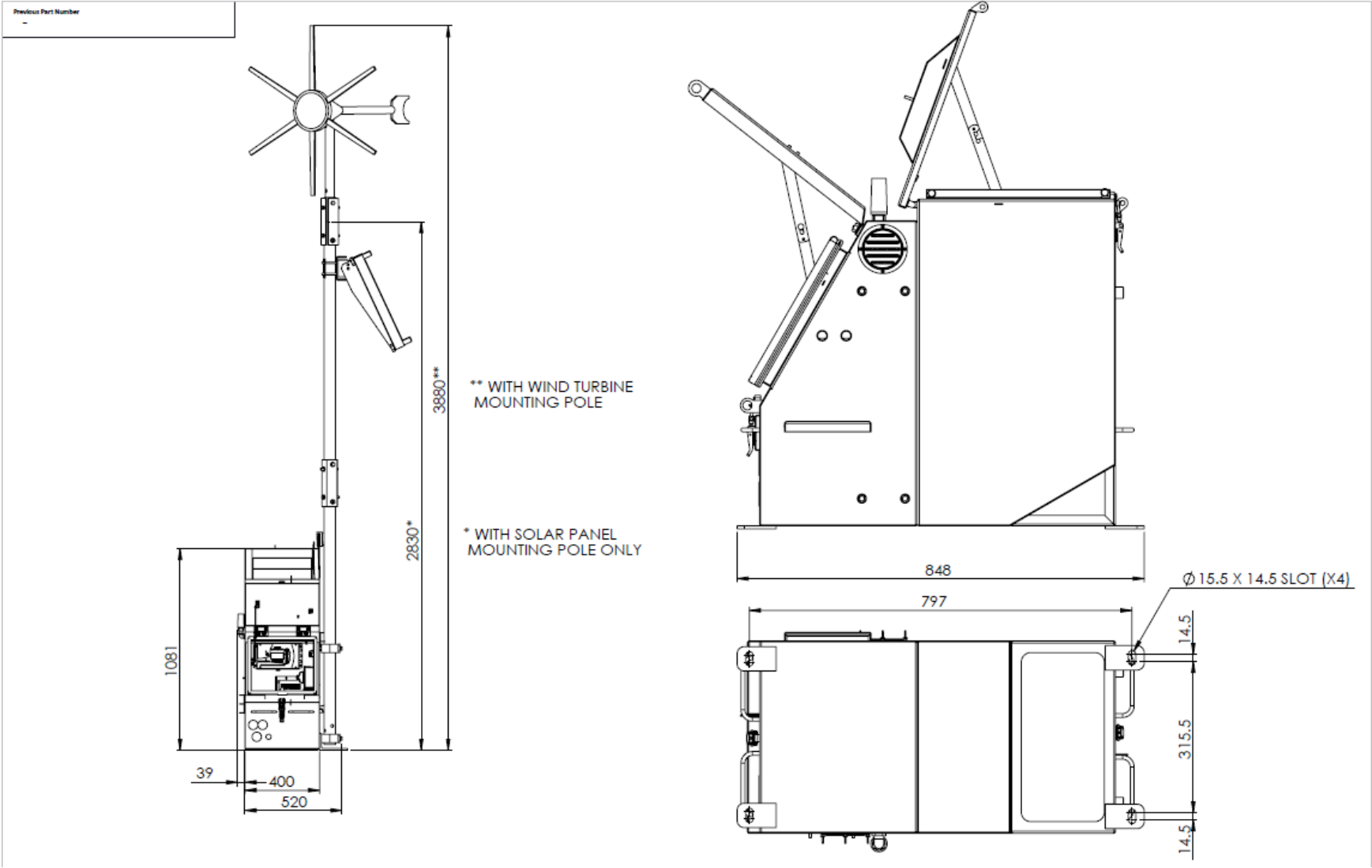
The unit also includes a power source, product distribution hoses, patented grease distribution units (GDU's) or top of rail distribution bars and an inductive non-contact wheel sensor.



Configuration Options

- > Top of Rail Friction Modifier (KELTRACK®)
- > Gauge face lubrication
- > Check rail lubrication
- > Switch blade protection
- > 90kg/360kg capacity
- > Power options include Solar, solar and wind or mains power (AC 115v/230V or DC12V)
- > Single or double track
- > Sensor for bi-directional traffic
- > Floor, wall or in-ground mounted
- > Anti-vandal solutions
- > Available for all common rail profile type and track forms
- > Quick release distribution bars





Thank you