

PW Hydraulic Lubricator

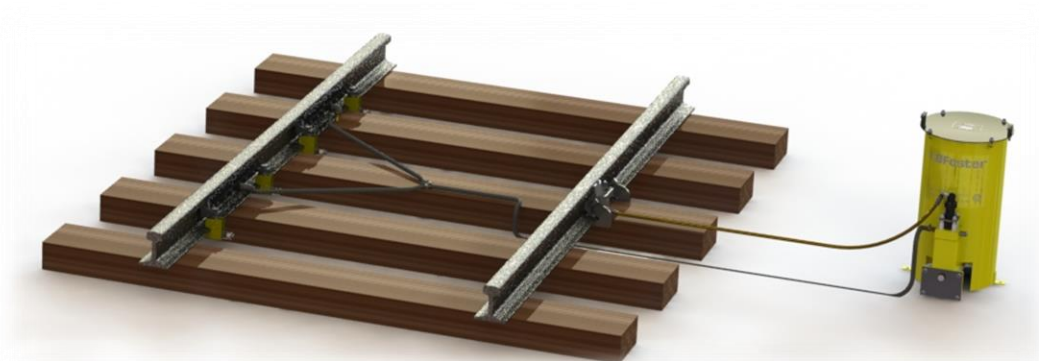
An economic and effective method for distributing grease to the rail

PW Hydraulic Lubricator

The PW series is a system designed to provide economical, effective rail and flange lubrication for all track and traffic conditions.

Key features

- > Reliability
- > Economy
- > Safety
- > Flexibility of Reverse Curve Application
- > 12.5kg, 25kg, 37.5kg, 50kg and 75kg reservoir sizes available
- > High and Low Speed Applications
- > Controlled output
- > Running and Check Rail Application



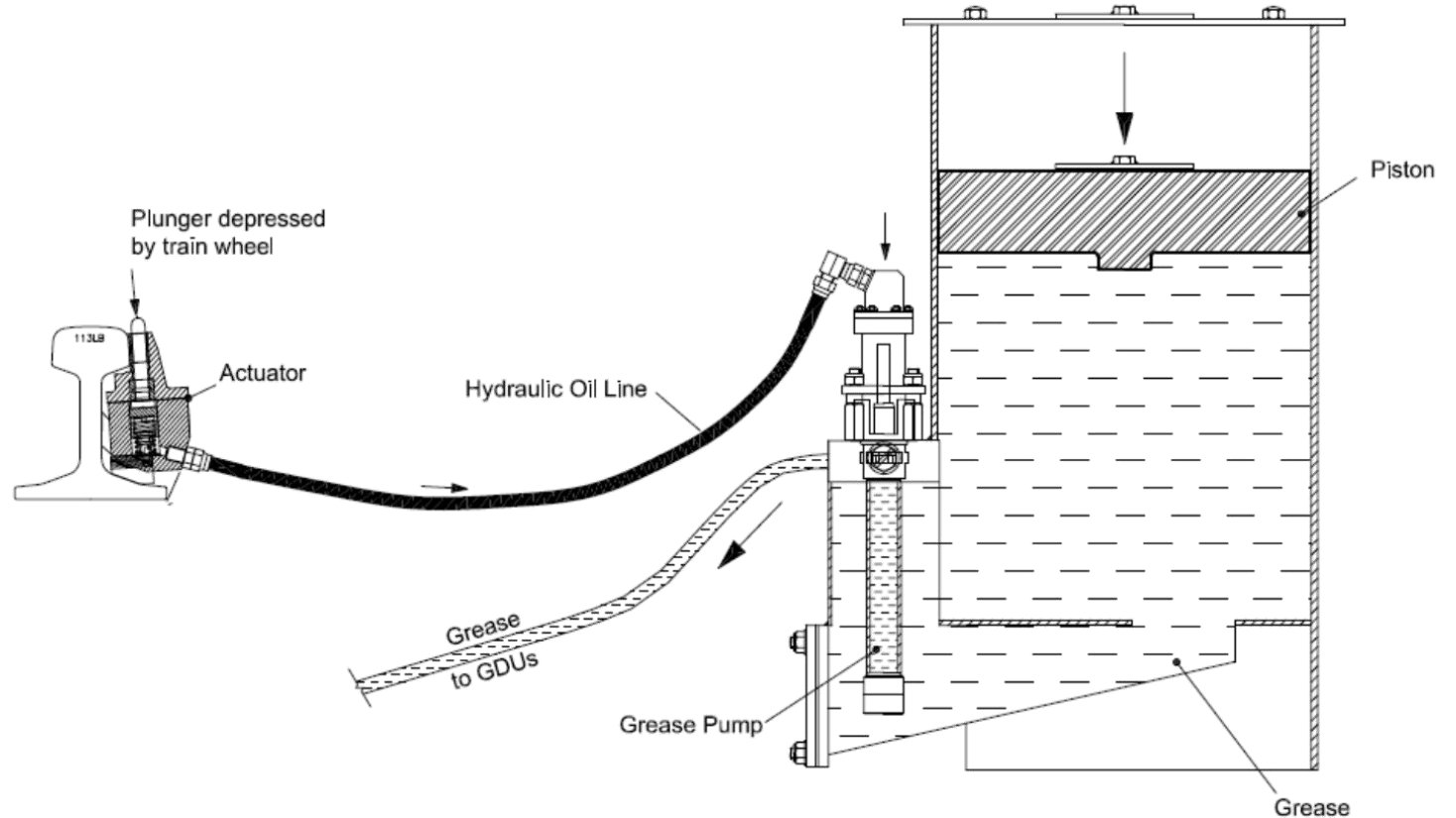
PW Hydraulic Lubricator

Grease output each time a wheel passes over the plunger.

Grease output can be controlled by a regulator valve on the side of the grease pump, which is fixed conveniently to the side of the grease container.

Our PW Series is available as a Single or Dual Rail version for one hand or both hand curves. It is also available as a check rail version.

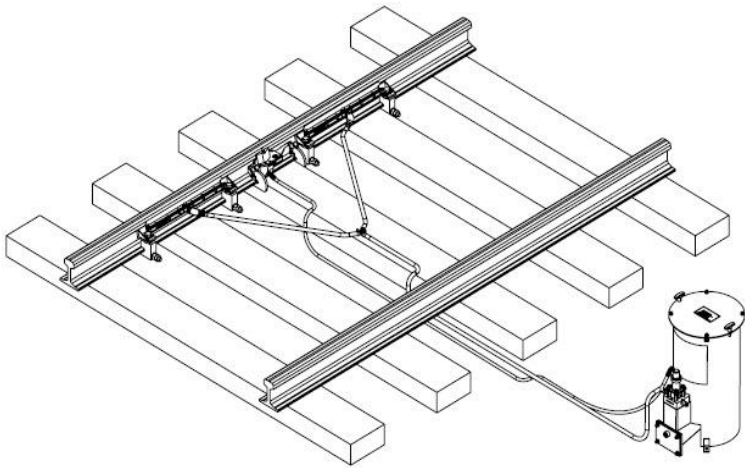
The PW Series requires no special pumps. Filling is carried out by simply discharging grease from pails direct into the grease container.



Location and Configurations

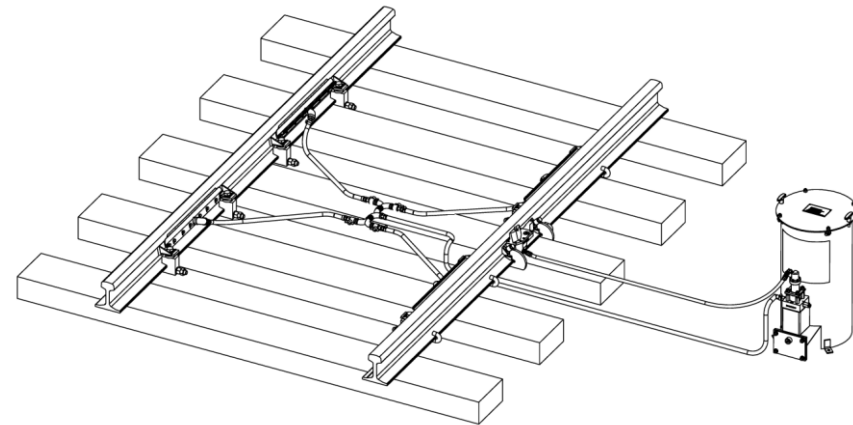
In curve application:

- > The lubricator can be fitted with two, or four grease applicator bars.
- > Fitting two bars to the high rail, the lubricator is placed in the transition of the rail curve.



Tangent track application:

- > Lubricator can be placed in straight track with four applicator bars.
- > Unit can treat several reverse curves.
- > Siting in straight track depends on:
 - > Vehicle characteristics.
 - > Type of grease that is applied.



Thank you