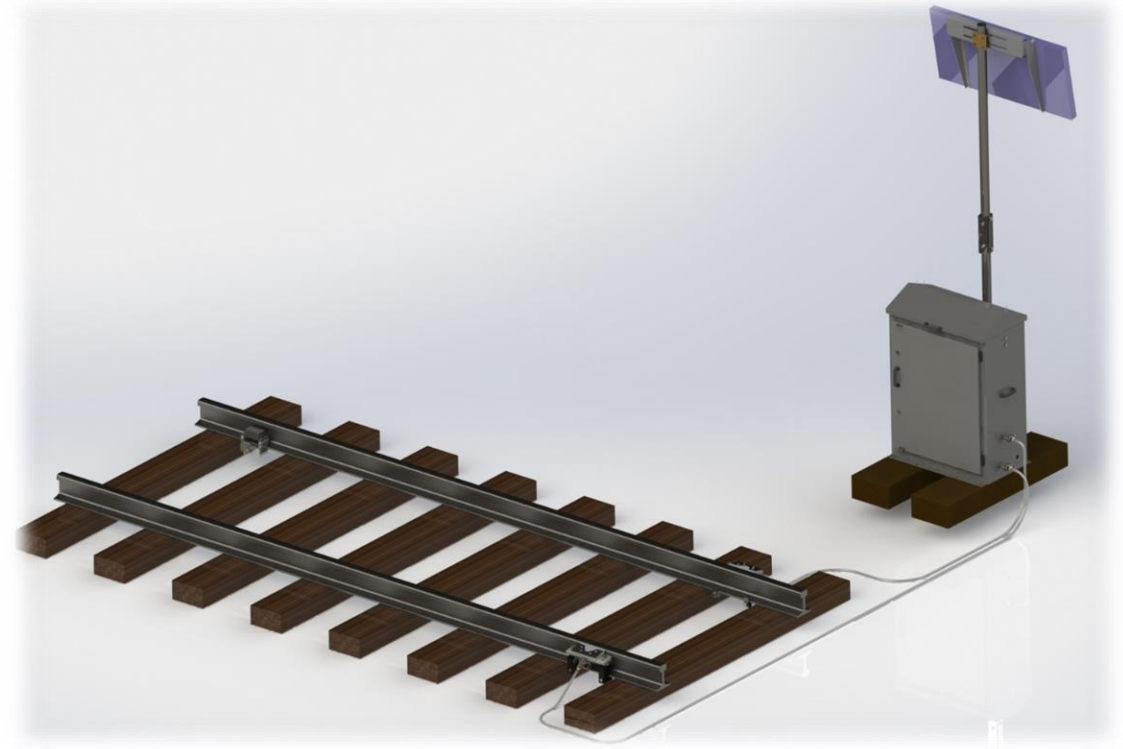


TGA3 – Traction Gel Applicator

An overview of the TGA

TGA3 overview

The TGA is optimised for the application of ALLEVIATE traction gel to the rail head. Which is applied specifically to mitigate the impacts of rail head contamination such as leaf films or oils on traction and braking performance.



TGA key features

- > Remote Performance Monitoring (RPM™) to monitor product level, battery condition and charging, wheel counts
- > Peristaltic Pumps which are able to pump fluids with high solid contents
- > Dual Peristaltic Pump/Motor Assemblies to ensure even product distribution to each rail
- > Designed for ease of access & maintenance
- > Easily removable electrical panel and peristaltic hoses to allow for easy decommissioning and recommissioning outside of autumn season
- > Lightweight and Portable allowing ease of installation – Can fit on a rail skate for moving to site.
- > Low power consumption.

No.	Component
1	75L Product Hopper
2	“Clean hands” electrical enclosure
3	Digital Control Box
4	Battery or AC/DC convertor
5	Pump and Motor Assembly 1
6	Pump and Motor Assembly 2

