

Top of Rail and Gauge Face applicator bars

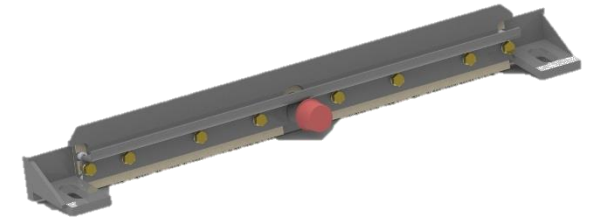
A description of L.B. Foster's Top of Rail and Gauge Face applicator bars

Gauge Face applicator bars

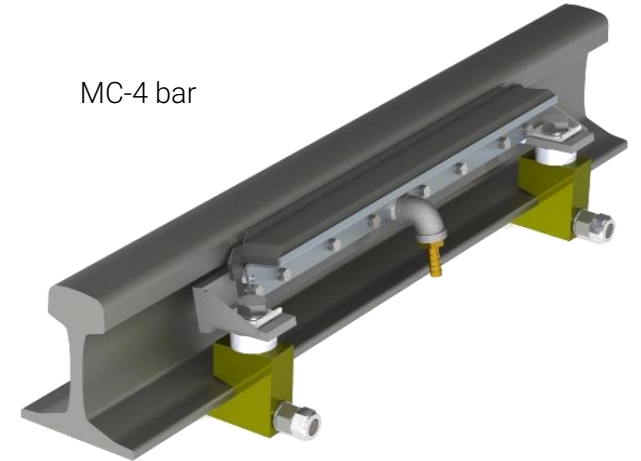
L.B. Foster have a range of gauge face bars, designed for easy installation on a wide range of rail profiles, good grease pick-up and carry down and good grease distribution through the ports.

The MC-4 bar is primarily designed for the transit market, the shorter bar is better suited to smaller radius curves, it is small and light and typically two bars would be installed on each rail.

The MC-4 XL bar is typically used in the freight market, and provides excellent grease distribution and minimal blocking



MC-4 bar



MC-4 bar with GREASEGUIDE



MC-4 XL bar with GREASEGUIDE

GREASEGUIDEs

L.B. Foster's MC-4 and MC-4 XL gauge face bars have the option to be supplied with a GREASEGUIDE. The grease guide is a highly durable foam pad which is set to just touch the wheel flange.

The grease guides improve pick up and carry down of the grease, resulting in greater coverage of the rail and reduced waste.

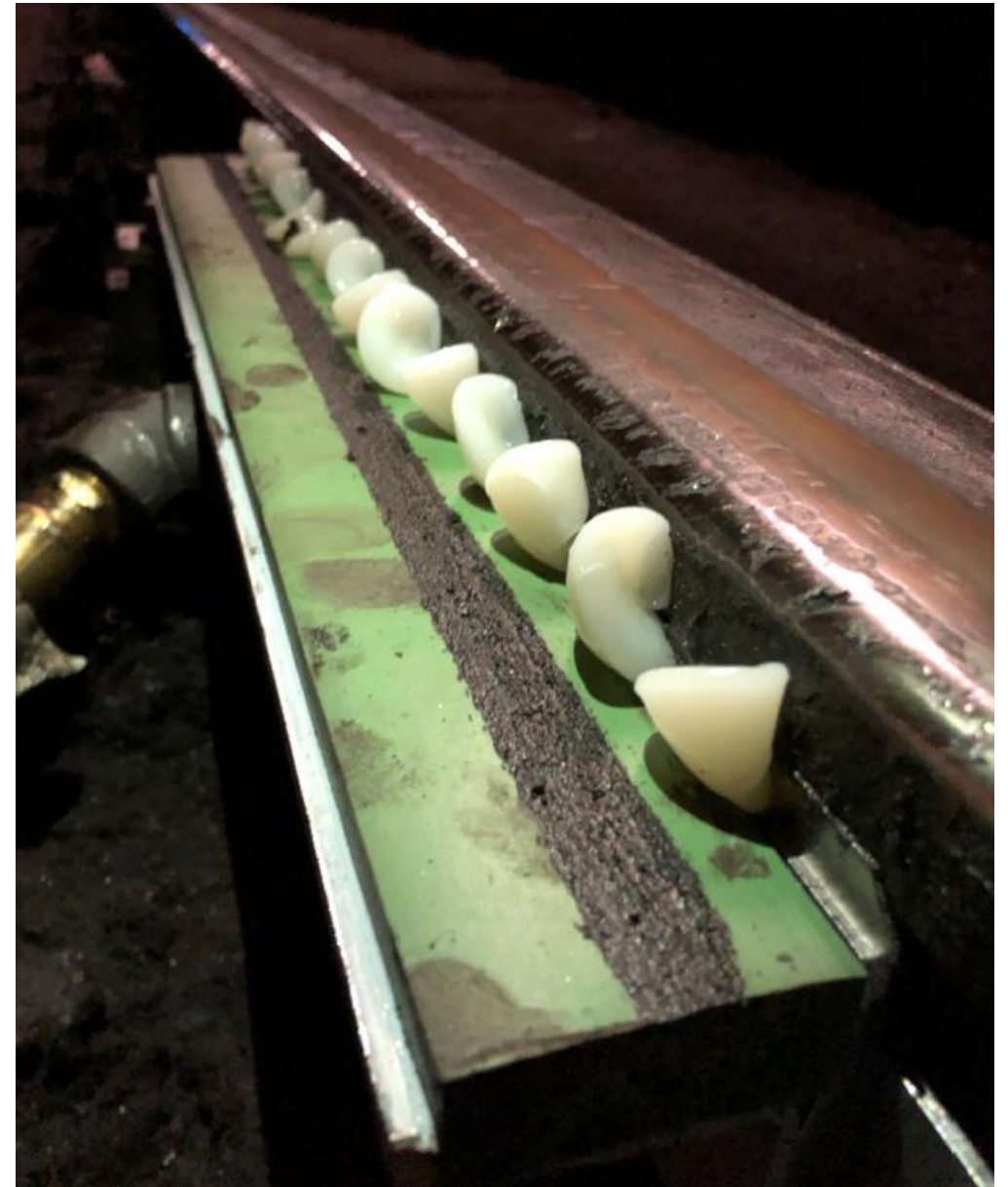
GREASEGUIDEs provide significant advantages over alternatives such as open cell foams and bristles, in terms of resistance, cleanliness and preventing excess grease being squeezed up to the railhead when a deep flange passes over the bar.



MC-5 gauge face bar

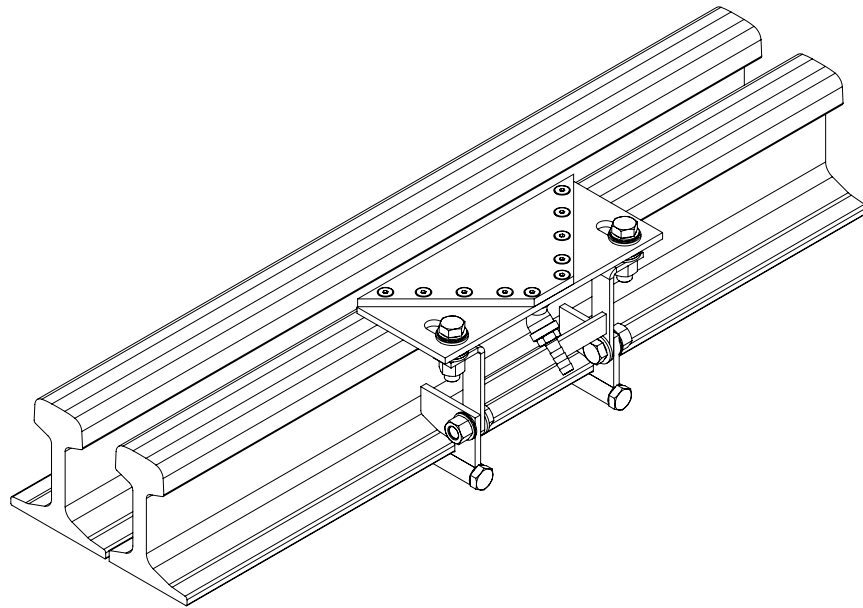
The MC-5 gauge face bar is L.B. Foster's latest gauge face bar. The new bar design incorporates the following improvements.

- > New manifold design eliminates port-to-port output variability. By equalizing the flow of grease to each dispensing port, bar clogging is significantly reduced and the optimal application of grease to the rail gauge side surface is maintained.
- > **Weight reduced by approximately 40%** per bar assembly, for a per bar saving of approximately 6.5 lbs (3 kgs).
- > New aluminium manifolds eliminate corrosion which can affect bar performance .
- > New gasket design reduces the likelihood of any leaks.
- > 'Plug-and-play' replacement for existing MC-4 applicator bar installations.

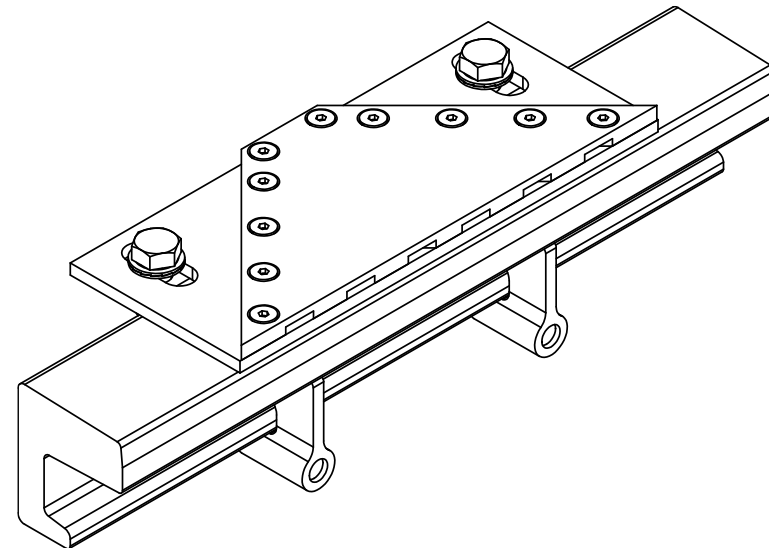
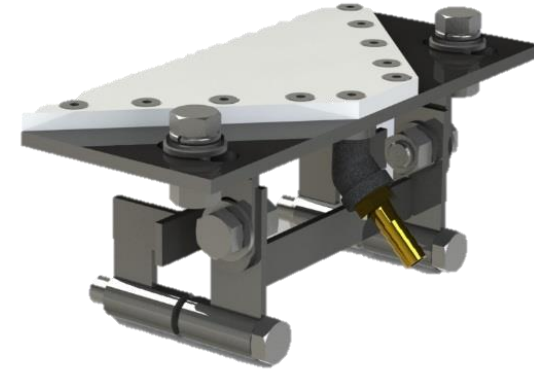


Check rail/restraining rail bars

L.B. Foster have a range of check rail/restraining rail bars and foot blocks to suit different rail types and configurations.



Restraining rail bar attached to flat bottom restraining rail



Restraining rail bar attached to UIC33 restraining rail

Top of rail applicator bars

L.B. Foster's range of top of rail applicator bars for friction modifiers are specifically designed for the application of KELTRACK and INFINITRACK top of rail friction modifiers onto the rail:

- > The ML bar
- > The top of rail foam bar



Top of Rail ML bar

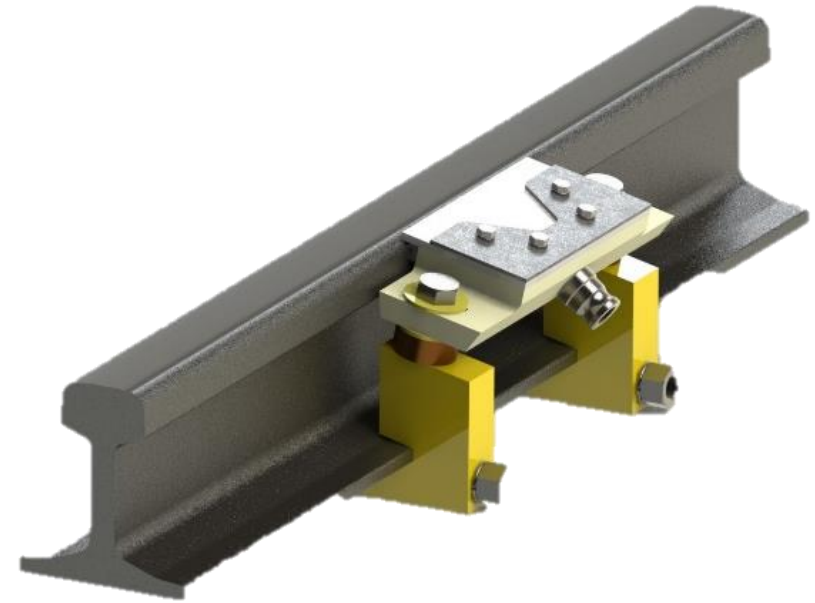


Top of Rail Foam bar

TGA spreader bar

The TGA spreader bar is specifically designed to distribute the ALLEVIATE traction gel onto the rail head.

This bar has been optimised to deal with the large solid particles within ALLEVIATE and to close to prevent product drying within the bar.



Quick release foot blocks

L.B. Foster's range of quick release foot blocks are compatible with all of our bars and most rail types. These use a cam quick release mechanism to allow for rapid removal of our bars to allow for maintenance activities such as grinding or tamping.

